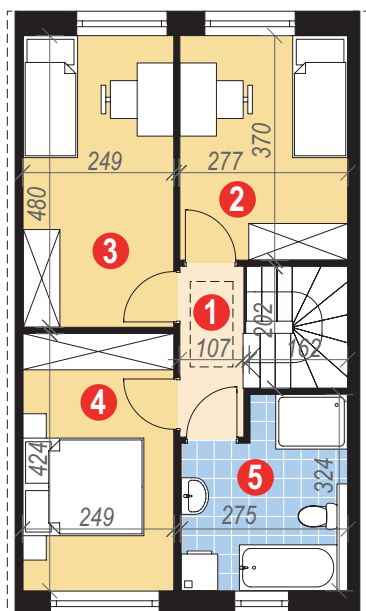
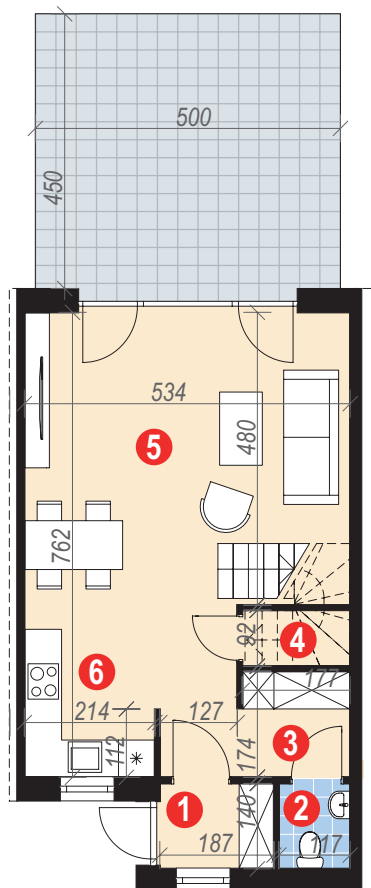
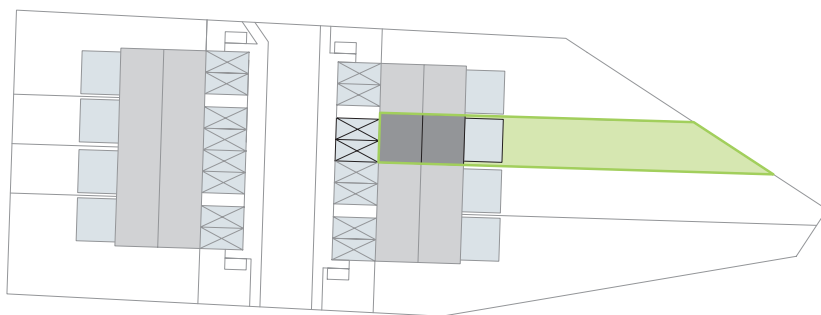


ZIELONY MROZÓW etap III

BUDYNEK II, LOKAL B

POWIERZCHNIA 83,05 m²

OGRÓD 157,0 m²



Parter 40,37 m²

1.	wiatrołap	2,55 m ²
2.	wc	1,59 m ²
3.	hall	6,47 m ²
4.	schowek	0,93 m ²
5.	pok. dzienny + jadalnia	22,46 m ²
6.	kuchnia	6,37 m ²

Poddasze 42,68 m²

1.	hall	2,94 m ²
2.	sypialnia	10,12 m ²
3.	sypialnia	11,71 m ²
4.	sypialnia	10,12 m ²
5.	łazienka	7,79 m ²

