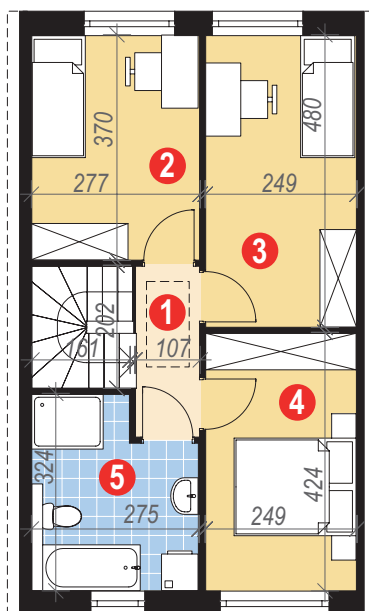
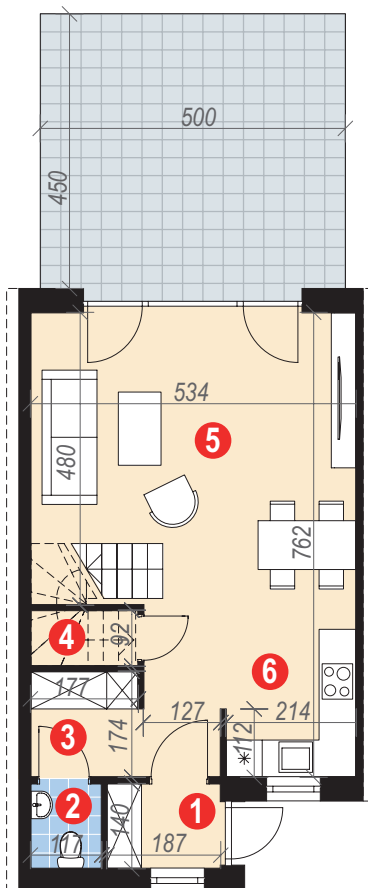
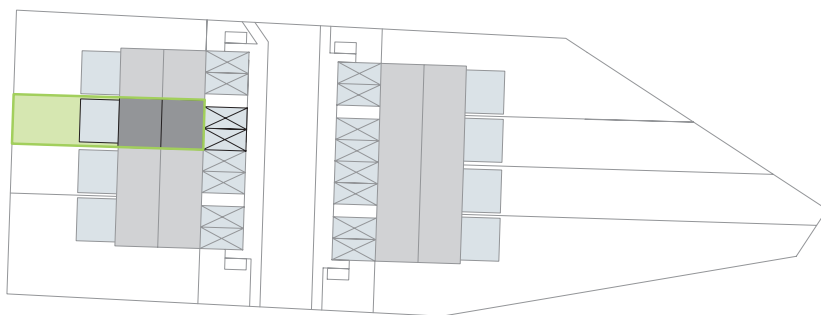


# ZIELONY MROZÓW etap III

BUDYNEK I, LOKAL C

POWIERZCHNIA 83,05 m<sup>2</sup>

OGRÓD 70,0 m<sup>2</sup>



## Parter 40,37 m<sup>2</sup>

1. wiatrołap	2,55 m <sup>2</sup>
2. wc	1,59 m <sup>2</sup>
3. hall	6,47 m <sup>2</sup>
4. schowek	0,93 m <sup>2</sup>
5. pok. dzienny + jadalnia	22,46 m <sup>2</sup>
6. kuchnia	6,37 m <sup>2</sup>

## Poddasze 42,68 m<sup>2</sup>

1. hall	2,94 m <sup>2</sup>
2. sypialnia	10,12 m <sup>2</sup>
3. sypialnia	11,71 m <sup>2</sup>
4. sypialnia	10,12 m <sup>2</sup>
5. łazienka	7,79 m <sup>2</sup>

