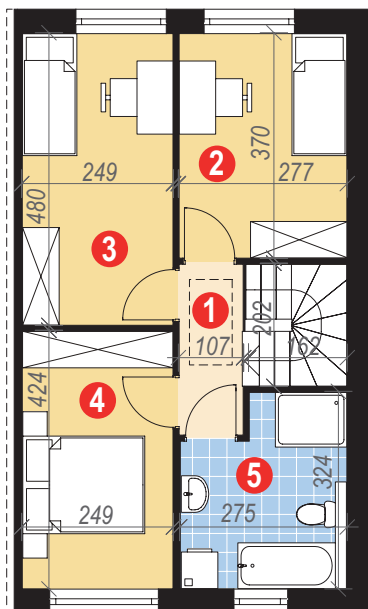
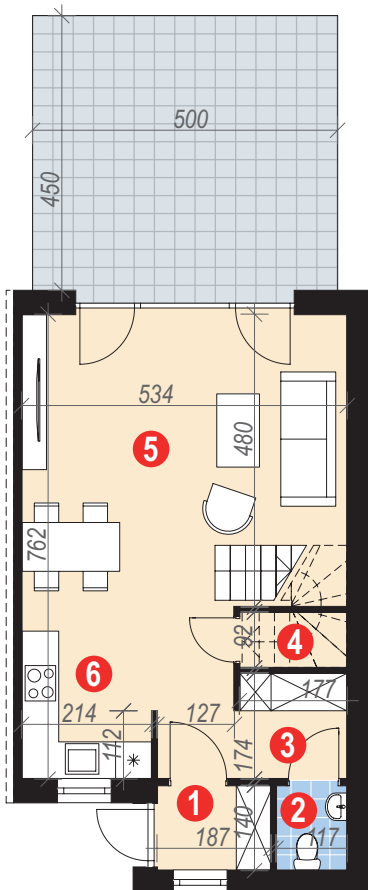
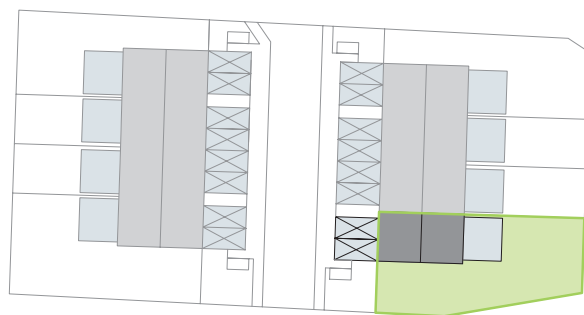


ZIELONY MROZÓW etap III

BUDYNEK II, LOKAL D

POWIERZCHNIA 84,05 m²

OGRÓD 201,0 m²



Parter 40,87 m²

1. wiatrołap	2,55 m ²
2. wc	1,59 m ²
3. hall	6,47 m ²
4. schowek	0,93 m ²
5. pok. dzienny + jadalnia	22,96 m ²
6. kuchnia	6,37 m ²

Poddasze 43,18 m²

1. hall	2,94 m ²
2. sypialnia	10,12 m ²
3. sypialnia	11,81 m ²
4. sypialnia	10,42 m ²
5. łazienka	7,89 m ²

